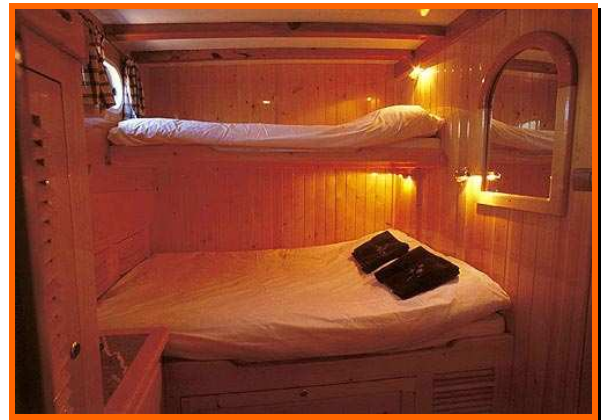
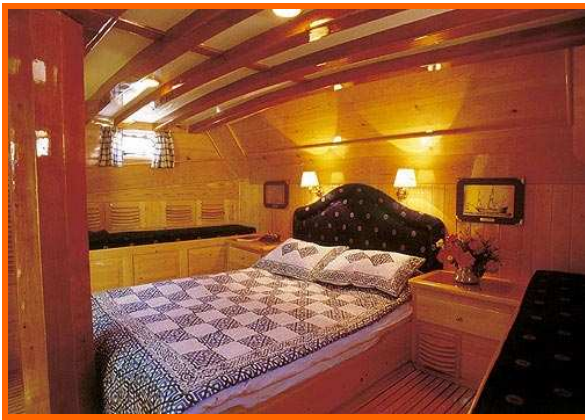




MS XENOS II





www.Turkey.GlobeCharter.com - turkey@globecharter.com
TEL.: +385 51 422 001, +385 51 422 002, +385 51 422 005 FAX.: +385 51 422 006

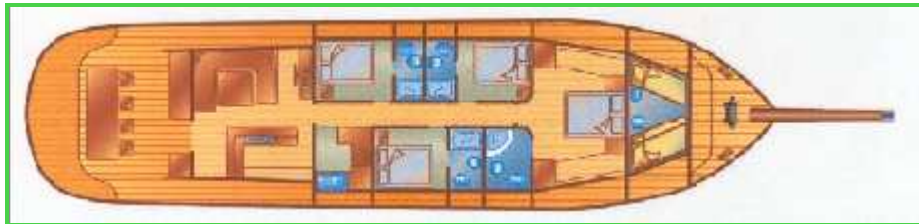


Accommodation :

The master cabin has a queen size bed and a bathroom en suite. There are three additional double cabins of which two have an upper single berth. The bathrooms are spacious, with marine toilets and shower cabins.

Additional equipment:

50 hp speedboat, water ski, windsurf, 2 canoes, snorkeling and fishing equipment.



Technical Specifications

LOD: 24 m
Beam: 6.5 m
Sail area: 280 m²
Engine: 240 HP Leyland
Generator: 1x17 kW Onan
Water: 4 tons
Fuel: 2 tons
Electricity: 12V + 24V
Fully air conditioned
Water ski, windsurf, canoes