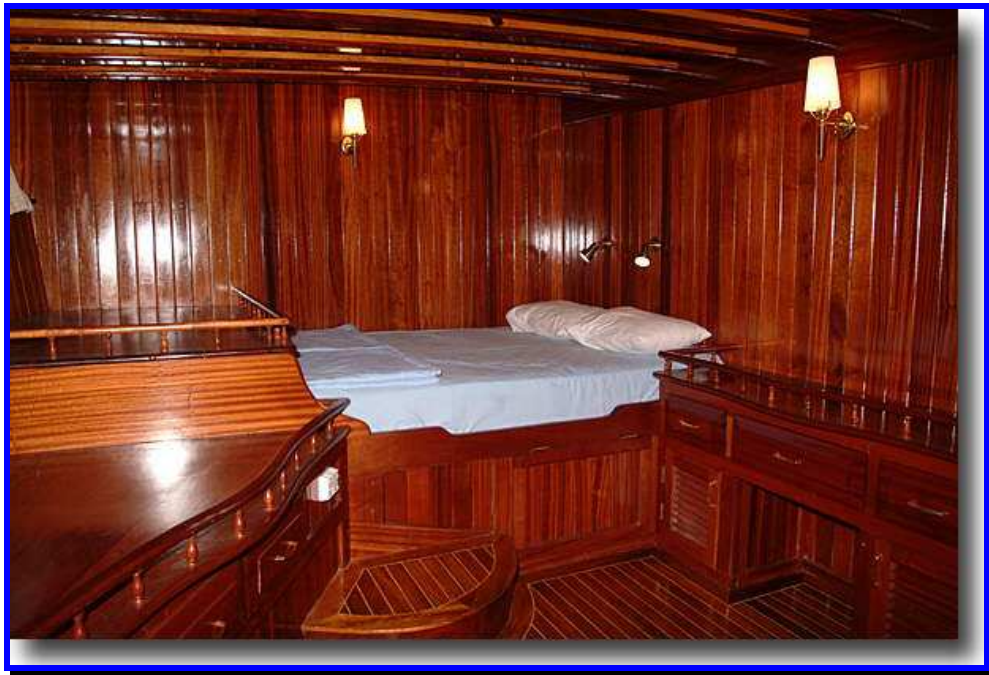
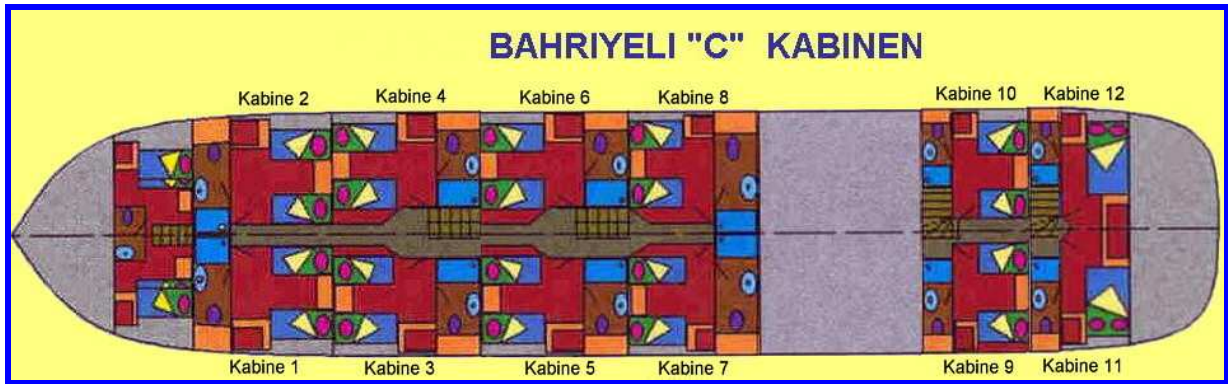


MSY Bahriyeli (C)









- Length: 44 Meters
- 12 very roomy cabins for two passengers each, with oversized bathroom (shower and toilet)
- 10 cabins with single beds, 2 cabins with double beds
- Year of Built: July 2005.
- Total length: 55 Meters
- Width: 8,70 Meters
- Hull below waterline: 36 Meters
- Draft: 3,40 Meters
- Engine: 2 x Volvo Penta with 600 PS each
- Generator: 2 x Onan 35 KW and 22 KW
- Battery capacity: 3200 Ah
- Diesel: 14 To
- Fresh water: 24 To
- Slop tank: 6 To
- Fruno 72 Milen Radar und GPS Video-Plotter
- Fruno Deepsonder
- Icovn WHF SAILOR WHF+DSC
- Air-conditioning and heating (adjustable in the coach)
- Heat Water System
- Full under canvas: 550 qm
- Rescue boat for 30 people
- Loyd certified
- 2 steering platforms
- 2 big Anchor
- 400 cain cable
- Amply sun deck
- 220 Volt , Bar, Music system, TV.