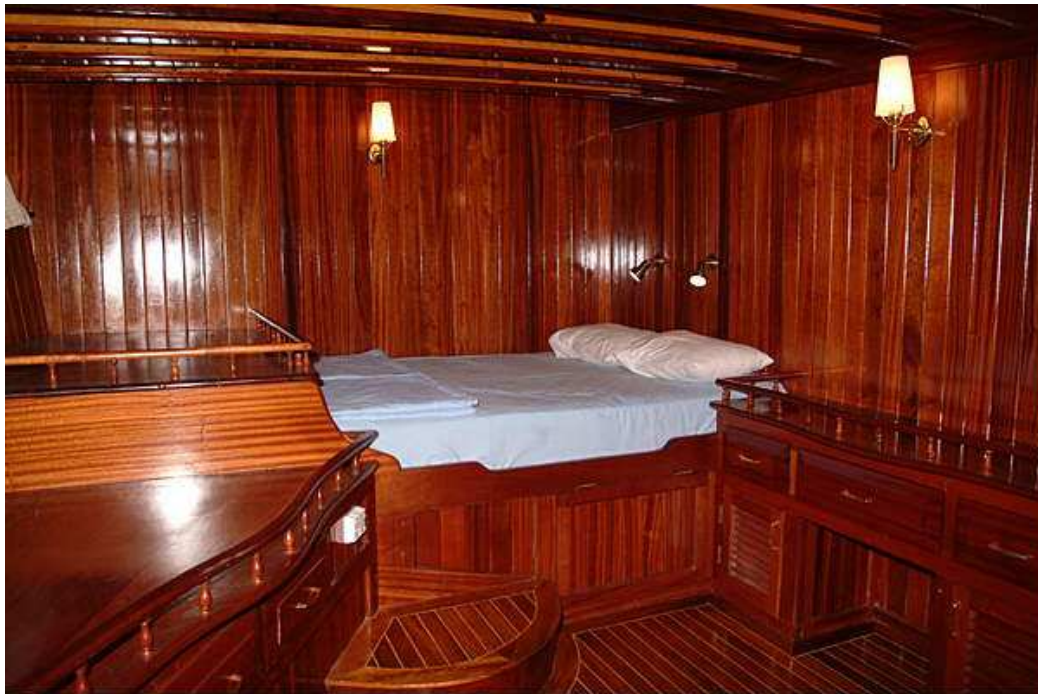


## MSY Bahriyeli (B)

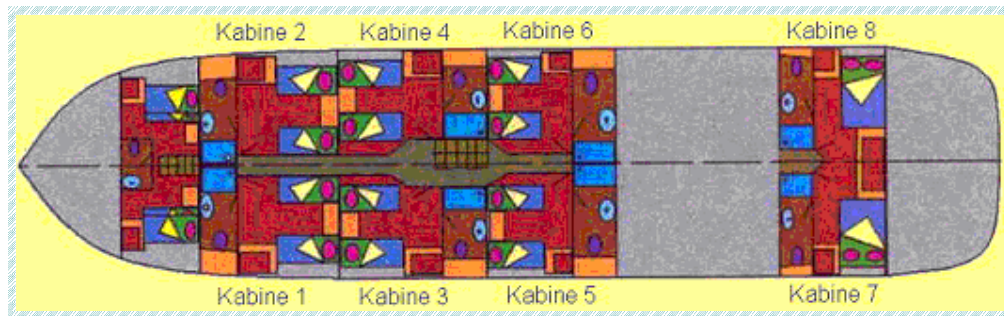






[turkey@globecharter.com](mailto:turkey@globecharter.com)

TEL.: +385 51 422 001, +385 51 422 002, +385 51 422 005, FAX.: +385 51 422 006



- Length: 33 Meters
- 8 very roomy cabins for two passengers each, with oversized bathroom (shower and toilet)
- 6 cabins with single beds, 2 cabins with double beds
- Year of Built: May 2003
- Total length: 40 Meters
- Width: 7,60 Meters
- Hull below waterline: 26 Meters
- Draft: 3,0 Meters
- Engine: 2 x Volvo Penta with 400 PS each
- Generator: 2 x Onan 22 KW
- Battery capacity: 2800 Ah
- Diesel: 10 To
- Fresh water: 14 To
- Slop tank: 3,5 To
- Fruno 72 Milen Radar und GPS Video-Plotter
- Fruno Deepsonder
- Icovn WHF SAILOR WHF+DSC
- Air-conditioning and heating (adjustable in the coach)
- Heat Water System
- Full under canvas: 350 qm
- Rescue boat for 20 people
- Loyd certified
- 2 steering platforms
- 2 big Anchor
- 400 Meters cain cable
- Amply sun deck
- 220 Volt , Bar, Music system, TV.



[turkey@globecharter.com](mailto:turkey@globecharter.com)

TEL.: +385 51 422 001, +385 51 422 002, +385 51 422 005, FAX.: +385 51 422 006